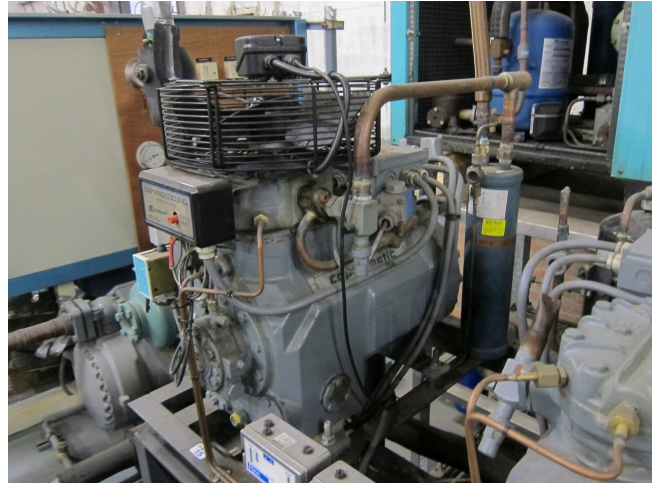


# DWM D2DB3-500-EWM

## Specifications

Brand	DWM
Type	D2DB3-500-EWM
Refrigerant	CO2
kW at -10°C/+40°C	16,4
kW at -20°C/+40°C	10,8
kW at -30°C/+40°C	6,6
Pressure safety switches	✓
Hp/Lp/Op	
Remarks	# // Including Head Fan
Sizes	500x320x420 mm (LxWxH)
Stock	1



## Description

**Used DWM D2DB3-500-EWM**

